

OutBack Power Systems

FW-CBUS

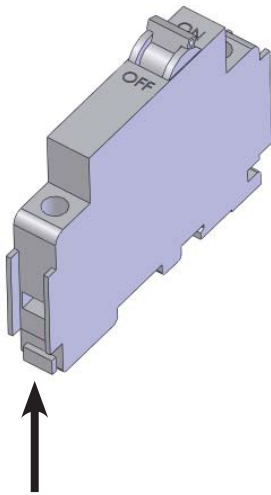
Torque to 32 inch-pounds

Box screw* lug for
PV positive output
conductor

FW-CBUS

Torque set
screws to 22
inch-pounds

Din Rail



6-14 AWG capacity

PSPV Din Rail CB Assembly

*Torque Values

AWG	Inch-Pounds
14	35
12	35
10	35
8	40
6	45
4	45
2	50
1	50
1/0	50